

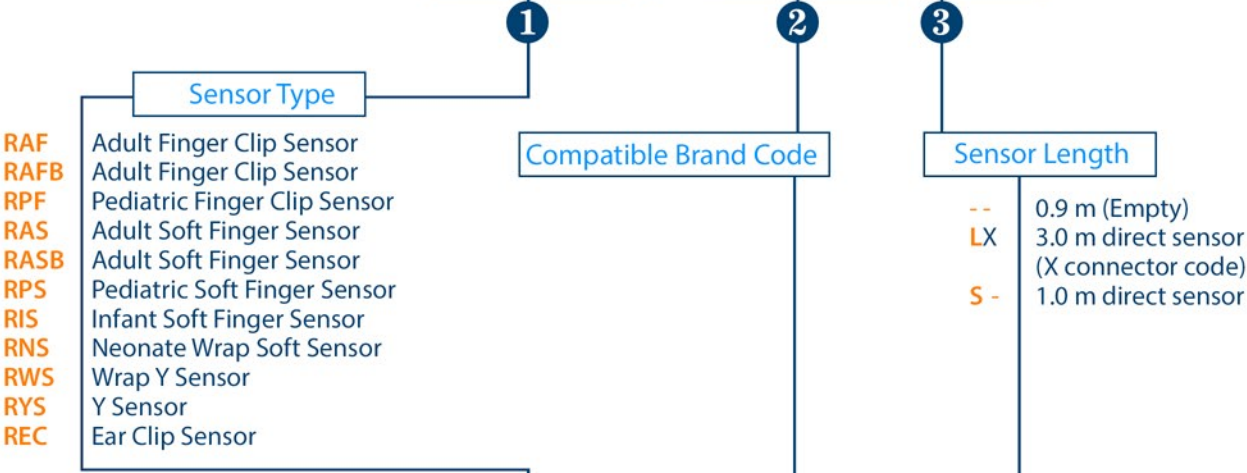
FMT

Medical Sensors, Cables and Accessories

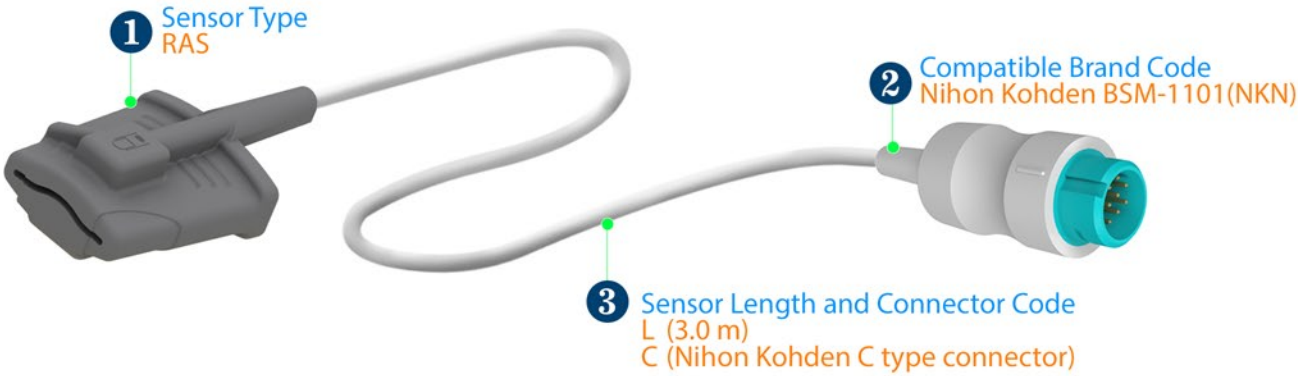


PULSE OXIMETRY SENSORS

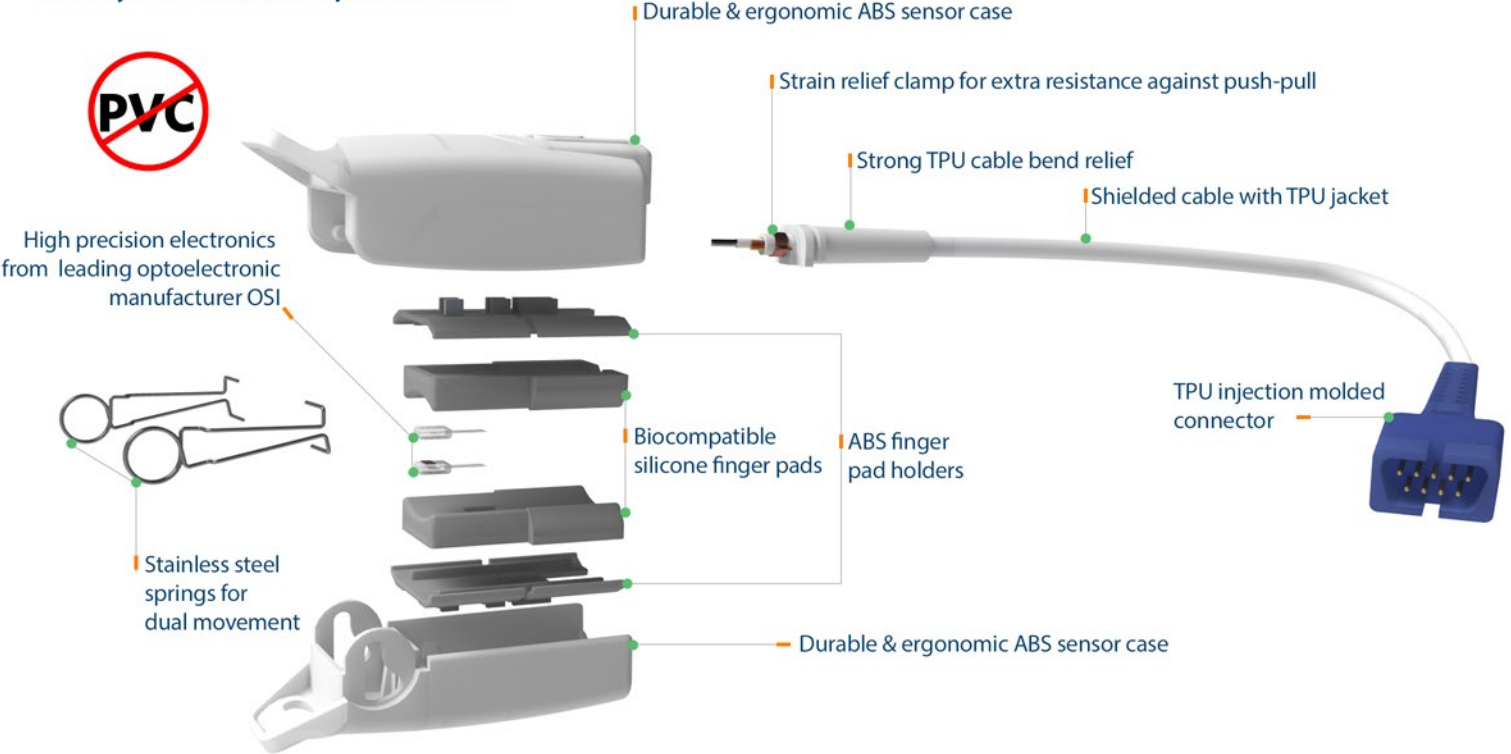
FMT-XXX / XXX-XX



FMT-RAS / NKN-LC



Why FMT Reusable SpO2 Sensors?



PULSE OXIMETRY SENSORS

Reusable

RAF

Adult Finger Clip Sensor

Cable Length: 0.9 m or 3.0 m

Application: Adult > 40 kg

Application Site: Index or other finger



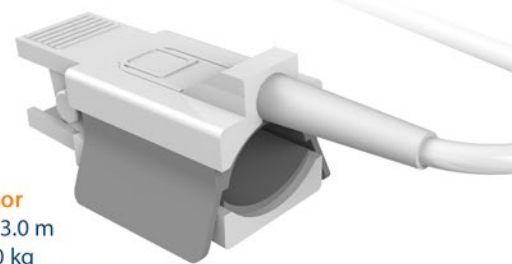
RAF (B)

Adult Finger Clip Sensor

Cable Length: 0.9 m or 3.0 m

Application: Adult > 40 kg

Application Site: Index or other finger



RPF

Pediatric Finger Clip Sensor

Cable Length: 0.9 m or 3.0 m

Application: Pediatric 10 - 40 kg

Application Site: Index or other finger



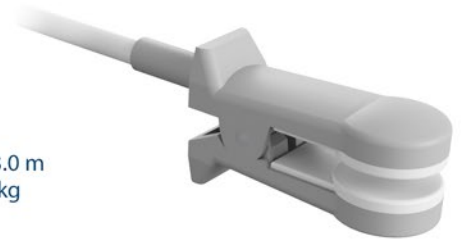
REC

Ear Clip Sensor

Cable Length: 0.9 m or 3.0 m

Application: Adult > 40 kg

Application Site: Ear



RAS

Adult Soft Finger Sensor

Cable Length: 0.9 m or 3.0 m

Application: Adult > 40 kg

Application Site: Index or other finger



RAS (B)

Adult Soft Finger Sensor

Cable Length: 0.9 m or 3.0 m

Application: Adult > 40 kg

Application Site: Index or other finger



RPS

Pediatric Soft Finger Sensor

Cable Length: 0.9 m or 3.0 m

Application: Pediatric 10 - 40 kg

Application Site: Index or other finger



RIS

Infant Soft Finger Sensor

Cable Length: 0.9 m or 3.0 m

Application: Infant 3-15 kg

Application Site: Index or other finger



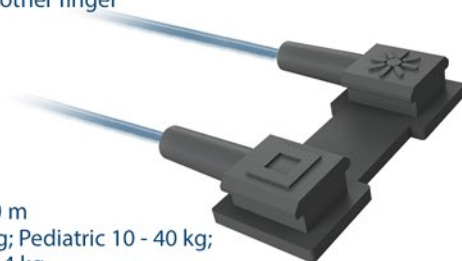
RWS

Wrap Y Sensor

Cable Length: 0.9 m or 3.0 m

Application: Adult > 40 kg; Pediatric 10 - 40 kg;
Infant 3-15 kg; Neonate 1- 4 kg

Application Site: Adult and Pediatric : Index or other finger /
Infant: great toe / Neonate : foot



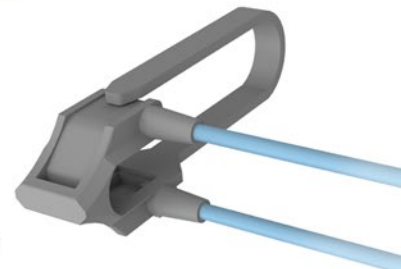
RNS

Neonate Wrap Soft Sensor

Cable Length: 0.9 m or 3.0 m

Application: Neonate 1- 4 kg

Application Site: Foot or hand palm



ECLP-01

Ear clip for RYS



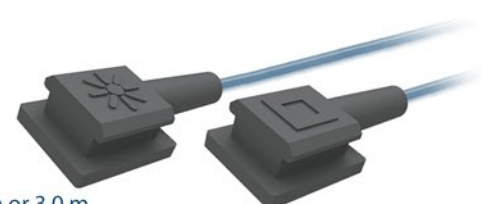
RYS

Y Sensor

Cable Length: 0.9 m or 3.0 m

Application: Adult > 40 kg; Pediatric 10 - 40 kg; Infant 3-15 kg;
Neonate 1- 4 kg

Application Site: Adult and Pediatric : Index or other finger /
Infant : great toe / Neonate : foot or hand palm



PULSE OXIMETRY SENSORS

Reusable

▼ Brands & Models

▼ Technology

▼ Monitor Side Connector

▼ Sensor Connector

Acendis

APM 3000

OXIMAX



Adapter & Extension Cable: **AEC-5263 (2.4 m)**



Sensor: **FMT-XXX/NLO (0.9 m)**

Adecon

DK7000/8000/8000D/8000L/8000M/8000N /8000S

NELLCOR



Adapter & Extension Cable: **AEC-5242 (2.4 m)**



Sensor: **FMT-XXX/NLC (0.9 m)**

NELLCOR



Direct Connect Sensor: **FMT-XXX/ADC-L (3.0 m)**

Armstrong

AD 900, 1000, 2000, 3000, 4000

BCI



Adapter & Extension Cable: **AEC-5105 (2.4 m)**



Sensor: **FMT-XXX/BCI (0.9 m)**

Baxter

Explorer, Monarch

NELLCOR



Adapter & Extension Cable: **AEC-5104 (2.4 m)**



Sensor: **FMT-XXX/NLC (0.9 m)**

BCI

BCI



Adapter & Extension Cable: **AEC-5105 (2.4 m)**



Sensor: **FMT-XXX/BCI (0.9 m)**

3040/3100/3101/3300/3301/3302/3303/3304/3401, 9100/9200, Advisor, Autocorr, Fingerprint, Mini Torr/Plus

BCI



Adapter & Extension Cable: **AEC-5133 (2.4 m)**



Sensor: **FMT-XXX/BCI (0.9 m)**

6100 , 9100 SERENA

BCI



Direct Connect Sensor: **FMT-XXX/BCI-LR (3.0 m)**

Biolight

M6, M12

BIOLIGHT



Direct Connect Sensor: **FMT-XXX/BLT-LR (3.0 m)**

AnyView A2/2E/3/5/6/8, Q3/5/7, V6, M7000/8500

DIGITAL



Adapter & Extension Cable: **AEC-5230 (2.4 m)**



Sensor: **FMT-XXX/BLT (0.9 m)**

DIGITAL



Direct Connect Sensor: **FMT-XXX/BLT-LC (3.0 m)**

PULSE OXIMETRY SENSORS

Reusable

▼ Brands & Models

▼ Technology

▼ Monitor Side Connector

▼ Sensor Connector

Biolight

M9500

DIGITAL



Adapter & Extension Cable: **AEC-5249 (2.4 m)**



Sensor: **FMT-XXX/BLT (0.9 m)**

DIGITAL



Direct Connect Sensor: **FMT-XXX/BLT-LV (3.0 m)**

Biolight

M8000A/9000/9000A

DIGITAL



Adapter & Extension Cable: **AEC-5172 (2.4 m)**



Sensor: **FMT-XXX/NTG (0.9 m)**

DIGITAL



Direct Connect Sensor: **FMT-XXX/CNC-LR (3.0 m)**

Bionet

BM 3, BM 3 Plus, BM3 Wide

NELCOR



Adapter & Extension Cable: **AEC-5120 (2.4 m)**



Sensor: **FMT-XXX/NLC (0.9 m)**

BM 5

NELCOR



Adapter & Extension Cable: **AEC-5151 (2.4 m)**



Sensor: **FMT-XXX/NLC (0.9 m)**

Biosys

BPM 200/700, Guardian, Sentry-NS.

NELCOR



Adapter & Extension Cable: **AEC-5104 (2.4 m)**



Sensor: **FMT-XXX/NLC (0.9 m)**

BPM 300

NELCOR



Adapter & Extension Cable: **AEC-5135 (2.4 m)**



Sensor: **FMT-XXX/NLC (0.9 m)**

NELCOR



Direct Connect Sensor: **FMT-XXX/BYS-L (3.0 m)**

Bird

4400

CSI



Adapter & Extension Cable: **AEC-5146 (2.4 m)**



Sensor: **FMT-XXX/CRT (0.9 m)**

CSI



Direct Connect Sensor: **FMT-XXX/CRT-LL (3.0 m)**

PULSE OXIMETRY SENSORS

Reusable

▼ Brands & Models

▼ Technology

▼ Monitor Side Connector

▼ Sensor Connector

Bruker / Odam

ALL

BCI



Adapter & Extension Cable: **AEC-5141 (2.4 m)**



Sensor: **FMT-XXX/BCI (0.9 m)**

BCI



Direct Connect Sensor: **FMT-XXX/BRC-L (3.0 m)**



Burdick Spacelabs

100, PRO2

BCI



Adapter & Extension Cable: **AEC-5105 (2.4 m)**



Sensor: **FMT-XXX/BCI (0.9 m)**

Cardiac Science

Diascope G2

NELCOR



Adapter & Extension Cable: **AEC-5186 (2.4 m)**



Sensor: **FMT-XXX/NLC (0.9 m)**

5300/5350

OXIMAX



Adapter & Extension Cable: **AEC-5149 (2.4 m)**



Sensor: **FMT-XXX/NLO (0.9 m)**

Lifepak 12/15/20

MASIMO



Adapter & Extension Cable: **AEC-5225 (2.4 m)**



Sensor: **FMT-XXX/MSM (0.9 m)***

MASIMO



Adapter & Extension Cable: **AEC-5215 (2.4 m)**



Sensor: **FMT-XXX/MSD (0.9 m)***

Cardioline

VSign 200

NELCOR



Adapter & Extension Cable: **AEC-5266 (2.4 m)**



Sensor: **FMT-XXX/NLC (0.9 m)**

NELCOR



Direct Connect Sensor: **FMT-XXX/CRD-L (3.0 m)**

Choice

MD 300

BCI



Adapter & Extension Cable: **AEC-5114 (2.4 m)**



Sensor: **FMT-XXX/BCI (0.9 m)**

* Refurbished Only

PULSE OXIMETRY SENSORS

Reusable

▼ Brands & Models

▼ Technology

▼ Monitor Side Connector

▼ Sensor Connector

Choice

BCI



Direct Connect Sensor: **FMT-XXX/CHC-LR (3.0 m)**

Colin

BP88/ 306/ 508/ 808/ 885, PRESS-MATE SAT

NELCOR



Adapter & Extension Cable: **AEC-5104 (2.4 m)**

Sensor: **FMT-XXX/NLC (0.9 m)**

BP308/ 408, BX5, BX10MA

MASIMO



Adapter & Extension Cable: **AEC-5225 (2.4 m)**

Sensor: **FMT-XXX/MSM (0.9 m)***

BP308/ 408, BX5, BX10MA

MASIMO



Adapter & Extension Cable: **AEC-5215 (2.4 m)**

Sensor: **FMT-XXX/MSD (0.9 m)***

Comen

C80

OXIMAX



Adapter & Extension Cable: **AEC-5228 (2.4 m)**

Sensor: **FMT-XXX/NLO (0.9 m)**

Contec

CMS 5000/5000C/5100/6000/6800/7000/7000Plus/8000/9000, HMS 6500

DIGITAL



Adapter & Extension Cable: **AEC-5172 (2.4 m)**

Sensor: **FMT-XXX/NTG (0.9 m)**

DIGITAL



Direct Connect Sensor: **FMT-XXX/CNC-LR (3.0 m)**

P VISE

NELCOR



Adapter & Extension Cable: **AEC-5197 (2.4 m)**

Sensor: **FMT-XXX/NLC (0.9 m)**

Corpuls

8/16

BCI



Adapter & Extension Cable: **AEC-5129 (2.4 m)**

Sensor: **FMT-XXX/BCI (0.9 m)**

3

MASIMO



Adapter & Extension Cable: **AEC-5229 (2.4 m)**

Sensor: **FMT-XXX/MSM (0.9 m)**

Criticare (CSI)

501/503/504/507/508/581/1100, Poet Plus 8100, Poni, Scholar

CSI



Adapter & Extension Cable: **AEC-5146 (2.4 m)**

Sensor: **FMT-XXX/CRT (0.9 m)**

* Refurbished Only

PULSE OXIMETRY SENSORS

Reusable

▼ Brands & Models

▼ Technology

▼ Monitor Side Connector

▼ Sensor Connector

Criticare (CSI)

501/503/504/507/508/581/1100, Poet Plus 8100, Poni, Scholar

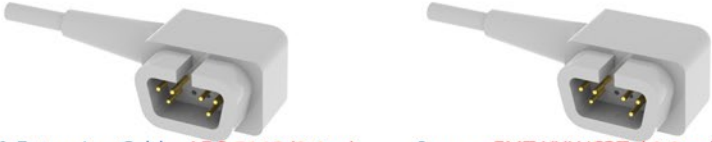
CSI



Direct Connect Sensor: **FMT-XXX/CRT-LL (3.0 m)**

503 Spot/DX, 504 DX, 506 DX NP, Mini SpO2

CSI

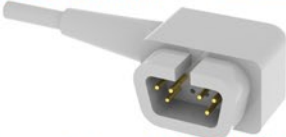


Adapter & Extension Cable: **AEC-5145 (2.4 m)**

Sensor: **FMT-XXX/CRT (0.9 m)**

503 Spot/DX, 504 DX, 506 DX NP, Mini SpO2

CSI



Direct Connect Sensor: **FMT-XXX/CRT-L (3.0 m)**

CU Medical

CU-HD1 Lifegain

OXIMAX



Adapter & Extension Cable: **AEC-5268 (2.4m)**

Sensor: **FMT-XXX/NLO (0.9 m)**

Datascope

ACCUSTAT, ACCUTOR 3 / 4 SAT, ACCUTORR PLUS, PASSPORT

DATASCOPE



Adapter & Extension Cable: **N/A**

Sensor: **FMT-XXX/DTS (0.9 m)**

DATASCOPE



Direct Connect Sensor: **FMT-XXX/DTS-L (3.0 m)**

Expert, Passport/2/2LT/V/XG, Accutorr V/Plus, Spectrum/OR, Trio, Duo, V12/21

NELLCOR



Adapter & Extension Cable: **AEC-5148 (2.4m)**

Sensor: **FMT-XXX/NLC (0.9 m)**

Expert, Passport/2/2LT/V/XG, Accutorr V/Plus, Spectrum/OR, Trio, Duo, V12/21

MASIMO



Adapter & Extension Cable: **AEC-5215 (2.4 m)**

Sensor: **FMT-XXX/MSD (0.9 m)***

Expert, Passport/2/2LT/V/XG, Accutorr V/Plus, Spectrum/OR, Trio, Duo, V12/21

MASIMO



Adapter & Extension Cable: **AEC-5225 (2.4 m)**

Sensor: **FMT-XXX/MSM (0.9 m)***

Digicare

Digimax 5500

BCI



Adapter & Extension Cable: **AEC-5105 (2.4 m)**

Sensor: **FMT-XXX/BCI (0.9 m)**

* Refurbished Only

PULSE OXIMETRY SENSORS

Reusable

▼ Brands & Models

▼ Technology

▼ Monitor Side Connector

▼ Sensor Connector

Digicare

Digioxii 920, P0930, Oxitrace, Digimax

BCI



Adapter & Extension Cable: **AEC-5133 (2.4 m)**

Sensor: **FMT-XXX/BCI (0.9 m)**

BCI



Direct Connect Sensor: **FMT-XXX/BCI-LR (3.0 m)**

Digioxii 920, P0930, Oxitrace, Digimax

BCI



Adapter & Extension Cable: **AEC-5144 (2.4 m)**

Sensor: **FMT-XXX/BCI (0.9 m)**

Digioxii 920, P0930, Oxitrace, Digimax

BCI



Direct Connect Sensor: **FMT-XXX/DGC-L (3.0 m)**

Life Window 6000

BCI



Adapter & Extension Cable: **AEC-5152 (2.4 m)**

Sensor: **FMT-XXX/BCI (0.9 m)**

BCI



Direct Connect Sensor: **FMT-XXX/DLW-L (3.0 m)**

Dixtal Biomedica

DX 405, DX 2010, DX 2020, DX 2021, DX 2022, DX 2023, DX 2405, DX 2515, DX 7100, DX 7300, DX 8100.

NOVAMETRIX
SUPER BRIGHT



Direct Connect Sensor: **FMT-XXX/DXT (1.5 m), FMT-XXX/DXT-L (3.0 m)**

Dolphin

2100/2150

DOLPHIN



Adapter & Extension Cable: **AEC-5153 (2.4 m)**

Sensor: **FMT-FMT-XXX/DLP (0.9 m)**

Dräger Siemens

Oxipac 2000 / 2500

BCI



Adapter & Extension Cable: **AEC-5105 (2.4 m)**

Sensor: **FMT-XXX/BCI (0.9 m)**

Cato, Cicero EM, Evita 4, Julian, PB8800, VM1/3, RM1, Vamos PM 8010/8014/8040/8050/8060, Vitara, Vitalert 1000

NELLCOR



Adapter & Extension Cable: **AEC-5154 (2.4 m)**

Sensor: **FMT-XXX/NLC (0.9 m)**

PULSE OXIMETRY SENSORS

Reusable

▼ Brands & Models

▼ Technology

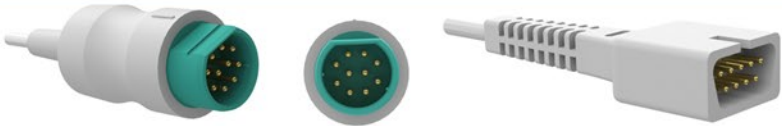
▼ Monitor Side Connector

▼ Sensor Connector

Dräger Siemens

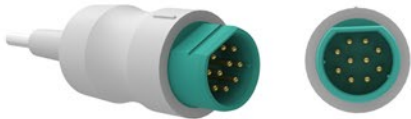
Micro 2, Sirecust 404-1/700/630, Sirem Module

NELCOR



Adapter & Extension Cable: **AEC-5131 (2.4 m)** Sensor: **FMT-XXX/NLC (0.9 m)**

NELCOR



Direct Connect Sensor: **FMT-XXX/SIE-L (3.0 m)**

Infinity Vista / Gamma / Kappa, Siemens, SC 5000/6000/6002/7000/8000/9000 (XL)

NELCOR



Adapter & Extension Cable: **AEC-5168 (1.0 m)** Sensor: **FMT-XXX/NLC (0.9 m)**

OXIMAX



Adapter & Extension Cable: **AEC-5219 (1.2 m)** Sensor: **FMT-XXX/NLO (0.9 m)**

MASIMO



Adapter & Extension Cable: **AEC-5252 (1.2 m)** Sensor: **FMT-XXX/MSD (0.9 m)**

Edan

iM 50/60/70/80, iM9/9A/8/8A/8B

NELCOR



Adapter & Extension Cable: **AEC-5106 (2.4 m)** Sensor: **FMT-XXX/NLC (0.9 m)**

M9B, M8B

OXIMAX



Adapter & Extension Cable: **AEC-5184 (2.4 m)** Sensor: **FMT-XXX/NLO (0.9 m)**

M9B, M8B

DIGITAL



Adapter & Extension Cable: **AEC-5241 (2.4 m)** Sensor: **FMT-XXX/NTG (0.9 m)**

Elite V5/V6/V8, iM20

DIGITAL

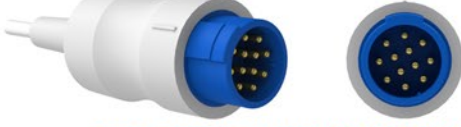


Adapter & Extension Cable: **AEC-5230 (2.4 m)** Sensor: **FMT-XXX/BLT (0.9 m)**

Emtel

FX 2000P/3000

DIGITAL



Direct Connect Sensor: **FMT-XXX/EMT-LD (3.0 m)**

PULSE OXIMETRY SENSORS

Reusable

▼ Brands & Models

▼ Technology

▼ Monitor Side Connector

▼ Sensor Connector

<p>Emtel</p> <p>FX 2000P/3000</p>	<p>OXIMAX</p>	<p>Adapter & Extension Cable: AEC-5247 (2.4 m)</p>	<p>Sensor: FMT-XXX/NLO (0.9 m)</p>
<p>FX 3000MD</p>	<p>OXIMAX</p>	<p>Direct Connect Sensor: FMT-XXX/EMT-LO (3.0 m)</p>	
<p>Entri Medical</p> <p>PROPAQ 102, 104,106</p>	<p>NELCOR</p>	<p>Adapter & Extension Cable: AEC-5149 (2.4 m)</p>	<p>Sensor: FMT-XXX/NLO (0.9 m)</p>
<p>Fukuda Denshi</p> <p>HG302 module, DS5100E, DS5300, DS5300W</p>	<p>NELCOR</p>	<p>Adapter & Extension Cable: N/A</p>	<p>Sensor: FMT-XXX/NLC (0.9 m)</p>
<p>Getemed</p> <p>VitalGuard</p>	<p>NELCOR</p>	<p>Adapter & Extension Cable: AEC-5148 (2.4 m)</p>	<p>Sensor: FMT-XXX/NLC (0.9 m)</p>
<p>GE Corometrics</p> <p>188, 129, 128, 128F, 129F, 511, 556</p>	<p>NELCOR</p>	<p>Adapter & Extension Cable: AEC-5104 (2.4 m)</p>	<p>Sensor: FMT-XXX/NLC (0.9 m)</p>
<p>188, 129, 511, 556</p>	<p>OHMEDA</p>	<p>Direct Connect Sensor: N/A</p>	<p>Sensor: FMT-XXX/NLC (0.9 m)</p>
<p>GE Critikon / Dinamap</p> <p>Dinamap 8700 / 8710 / 8720, Dinamap Plus, OxyShuttle 1/2</p>	<p>CRITIKON</p>	<p>Direct Connect Sensor: N/A</p>	
<p>Dinamap 9700, 9710, 9720, Dinamap PLUS, Compact, MPS, PRO 300 / 400.</p>	<p>NELCOR</p>	<p>Adapter & Extension Cable: AEC-5104 (2.4 m)</p>	<p>Sensor: FMT-XXX/NLC (0.9 m)</p>

PULSE OXIMETRY SENSORS

Reusable

▼ Brands & Models

▼ Technology

▼ Monitor Side Connector

▼ Sensor Connector

GE Critikon / Dinamap

Dinamap OxyTrak 8280 1846SX

CRITIKON



Direct Connect Sensor: N/A

GE Datex

S/5, AS/3, CS/3, CH S/2S/RS, CG 2S/2CS, Cardio Cap 1/2/5, Capnomac Ultima, Light, M series modules, Oscar 2, OSP200, Satlite Trans/Plus II, Ult SVI/SVO/SIO/SOO.

DATEX



Adapter & Extension Cable: AEC-5111 (2.4 m)



Sensor: FMT-XXX/DTX (0.9 m)

GE



Adapter & Extension Cable: AEC-5187 (2.4 m)



Sensor: FMT-XXX/OXY (0.9 m)

GE



Adapter & Extension Cable: AEC-5204 (2.4 m)



Sensor: FMT-XXX/OXN (0.9 m)

DATEX



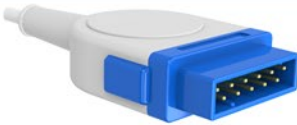
Direct Connect Sensor: FMT-XXX/DTX-L (3.0 m)



GE Datex Ohmeda

E series module i4 modular S5 monitors Corometrics 259, Dinamap V100, Carescape B650/V100, B20/30/40.

GE

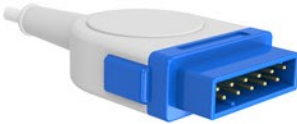


Adapter & Extension Cable: AEC-5188 (2.4 m)



Sensor: FMT-XXX/OXY (0.9 m)

GE

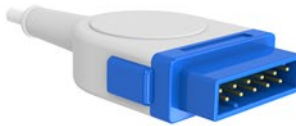


Adapter & Extension Cable: AEC-5202 (2.4 m)



Sensor: FMT-XXX/OXN (0.9 m)

GE



Direct Connect Sensor: FMT-XXX/GOX-L (3.0 m)



GE Dinamap

DINAMAP PRO series V1, PRO1000V2

NELLCOR



Adapter & Extension Cable: AEC-5148 (2.4 m)



Sensor: FMT-XXX/NLC (0.9 m)

PULSE OXIMETRY SENSORS

Reusable

▼ Brands & Models

▼ Technology

▼ Monitor Side Connector

▼ Sensor Connector

GE Dinamap

Procare, Pro series V2, ProMap, Pro300/1000/1000V3

OXIMAX



Adapter & Extension Cable: **AEC-5149 (2.4 m)**

Sensor: **FMT-XXX/NLO (0.9 m)**

Dinamap Compact, MPS

OXIMAX



Adapter & Extension Cable: **AEC-5140 (2.4 m)**

Sensor: **FMT-XXX/NLO (0.9 m)**

Expert, Passport/2/2LT/V/XG, Accutorr V/Plus, Spectrum/OR, Trio, Duo, V12/21

MASIMO



Adapter & Extension Cable: **AEC-5225 (2.4 m)**

Sensor: **FMT-XXX/MSM (0.9 m)***

MASIMO



Adapter & Extension Cable: **AEC-5215 (2.4 m)**

Sensor: **FMT-XXX/MSD (0.9 m)***

GE Hellige

Hellige SMU, SMK, Eagle 1000/2000/3000, CardioServ

NELCOR



Adapter & Extension Cable: **AEC-5159 (2.4 m)**

Sensor: **FMT-XXX/NLC (0.9 m)**

GE Marquette

Eagle 1000/3000/4000, Dash 2000/3000/5000, Solar 8000, Tram Module 450SL/451/851, Corometrics 120/2120, MacLab, Responder 3000.

NELCOR



Adapter & Extension Cable: **AEC-5161 (2.4 m)**

Sensor: **FMT-XXX/NLC (0.9 m)**

NELCOR



Direct Connect Sensor: **FMT-XXX/MRQ-L (3.0 m)**

Dash 2500/4000/5000, Solar 8000i, Tram Module 451N/851N, Corometrics 250 series.

OXIMAX



Adapter & Extension Cable: **AEC-5163 (2.4 m)**

Sensor: **FMT-XXX/NLO (0.9 m)**

OXIMAX



Direct Connect Sensor: **FMT-XXX/MRQ-LO (3.0 m)**

MASIMO



Adapter & Extension Cable: **AEC-5162 (2.4 m)**

Sensor: **FMT-XXX/MSD (0.9 m)***

* Refurbished Only

PULSE OXIMETRY SENSORS

Reusable

▼ Brands & Models

▼ Technology

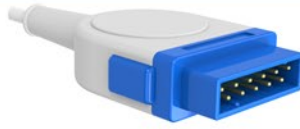
▼ Monitor Side Connector

▼ Sensor Connector

GE Marquette

Dinamap, Procare, Pro Serisi V2, Pro 1000V3, Dash 2500/3000/4000/5000, Solar 8000M, Tram Modül 451M/851M.

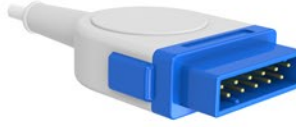
MASIMO



Adapter & Extension Cable: **AEC-5217 (2.4 m)**

Sensor: **FMT-XXX/MSM (0.9 m)***

MASIMO



Direct Connect Sensor: **FMT-XXX/MRQ-LM (3.0 m)**

GE Ohmeda

Ohmeda 3700/3710/3770/3775/3800/3900, OxiCap 5250 RGM, Biox 3740/3760/3800/4700, Rascal 2, OxiTip Plus, TuffSat.

OHMEDA



Adapter & Extension Cable: **AEC-5190 (2.4 m)**

Sensor: **FMT-XXX/OXY (0.9 m)**

OHMEDA



Adapter & Extension Cable: **AEC-5205 (2.4 m)**

Sensor: **FMT-XXX/OXN (0.9 m)**

OHMEDA



Direct Connect Sensor: **FMT-XXX/OHM-L (3.0 m) FMT-XXX/OHM-S (1.0 m)**

Ohmeda 3700/3710/3770/3775/3800/3900, OxiCap 5250 RGM, Biox 3740/3760/3800/4700, Rascal 2, OxiTip Plus, TuffSat.

Marquette 7000 serisi, TRAM/AR, Modüler X00SL serisi

GE



Adapter & Extension Cable: **AEC-5189 (2.4 m)**

Sensor: **FMT-XXX/OXY (0.9 m)**

GE



Adapter & Extension Cable: **AEC-5201 (2.4 m)**

Sensor: **FMT-XXX/OXN (0.9 m)**

GE Ohmeda

GE



Direct Connect Sensor: **FMT-XXX/TRS-L (3.0 m)**

Generra PaceTech

Vitalmax 4000 Series, 710B

NELLCOR



Adapter & Extension Cable: **AEC-5119 (2.4 m)**

Sensor: **FMT-XXX/NLC (0.9 m)**

NELLCOR



Adapter & Extension Cable: **N/A**

Sensor: **FMT-XXX/NLC (0.9 m)**

PULSE OXIMETRY SENSORS

Reusable

▼ Brands & Models

▼ Technology

▼ Monitor Side Connector

▼ Sensor Connector

Generra PaceTech

VITALMAX 200, 300, 400, 530, 710, 800 series

NELLCOR



Adapter & Extension Cable: **AEC-5108 (2.4 m)**



Sensor: **FMT-XXX/NLC (0.9 m)**

Goldway

UT4000A/F/A Pro/F Pro

BCI



Adapter & Extension Cable: **AEC-5134 (2.4 m)**



Sensor: **FMT-XXX/BCI (0.9 m)**

BCI



Direct Connect Sensor: **FMT-XXX/GLD-LL (3.0 m)**

BCI



Adapter & Extension Cable: **AEC-5132 (2.4 m)**



Sensor: **FMT-XXX/BCI (0.9 m)**

BCI



Direct Connect Sensor: **FMT-XXX/GLD-LR (3.0 m)**

OXIMAX



Adapter & Extension Cable: **AEC-5121 (2.4 m)**



Sensor: **FMT-XXX/NLO (0.9 m)**

Guoteng

GT9000E/B/F/M, GT9003B/F/M, Q5

NELLCOR



Adapter & Extension Cable: **AEC-5143 (2.4 m)**



Sensor: **FMT-XXX/NLC (0.9 m)**

Guoteng

GT9000E/B/F/M, GT9003B/F/M, Q5

GUOTENG



Direct Connect Sensor: **FMT-XXX/GTG-LR (3.0 m)**

HealForce

Prince 100F, Classic 90, Deluxe 70, Vital Sign Monitor.

DIGITAL



Direct Connect Sensor: **FMT-XXX/PRN-LR (3.0 m)**

Healthdyne

ALL

NONIN



Adapter & Extension Cable: **AEC-5191 (2.4 m)**



Sensor: **FMT-XXX/NON (0.9 m)**

PULSE OXIMETRY SENSORS

Reusable

▼ Brands & Models

▼ Technology

▼ Monitor Side Connector

▼ Sensor Connector

Huntleigh

Smartsigns Compact 1000

DOLPHIN



Adapter & Extension Cable: **AEC-5153 (2.4 m)**



Sensor: **FMT-XXX/DLP (0.9 m)**

Infinium

Omni, Omni II, Omni III, Omni (K), Omni Express, Omni Express VS

DIGITAL



Adapter & Extension Cable: **AEC-5203 (2.4 m)**



Sensor: **FMT-XXX/NTG (0.9 m)**

DIGITAL



Direct Connect Sensor: **FMT-XXX/IFM-L (3.0 m)**

Innomed

Oxycard, Innocare-T

NELLCOR



Adapter & Extension Cable: **AEC-5104 (2.4 m)**



Sensor: **FMT-XXX/NLC (0.9 m)**

NONIN



Adapter & Extension Cable: **AEC-5191 (2.4 m)**



Sensor: **FMT-XXX/NON (0.9 m)**

Innocare-S, Innocare-T12

NELLCOR



Adapter & Extension Cable: **AEC-5101 (2.4 m)**



Sensor: **FMT-XXX/NLC (0.9 m)**

Invicare

ALL

BCI



Adapter & Extension Cable: **AEC-5105 (2.4 m)**



Sensor: **FMT-XXX/BCI (0.9 m)**

Invivo - MDE

4500 Plus, 4500 Plus /1/2/3/, Millennia, Omega14 45, Omni-Trak, TVS, Sat Scout, Scout ES.

NELLCOR



Adapter & Extension Cable: **AEC-5170 (2.4 m)**



Sensor: **FMT-XXX/NLC (0.9 m)**

INVIVO



Direct Connect Sensor: **FMT-XXX/INV-L (3.0 m)**

MDE Escort M8, M12

MASIMO



Adapter & Extension Cable: **AEC-5208 (2.4 m)**



Sensor: **FMT-XXX/MSM (0.9 m)***

* Refurbished Only

▼ Brands & Models

▼ Technology

▼ Monitor Side Connector

▼ Sensor Connector

Invivo - MDE

Escort 100 OPT11A, Escort 300A, Escort II OPT 30, Prism

NELCOR



Adapter & Extension Cable: **AEC-5104 (2.4 m)**

Sensor: **FMT-XXX/NLC (0.9 m)**

Ivy Biomedical

405A, 405D

NELCOR



Adapter & Extension Cable: **N/A**

Sensor: **FMT-XXX/NLC (0.9 m)**

405P, 405T

NELCOR



Adapter & Extension Cable: **AEC-5104 (2.4 m)**

Sensor: **FMT-XXX/NLC (0.9 m)**

SAT-Guard IVY2000, 405TM, 405CM

MASIMO



Adapter & Extension Cable: **AEC-5225 (2.4 m)**

Sensor: **FMT-XXX/MSM (0.9 m)***

Konica Minolta

Pulsox-300, Pulsox-300i and Check Sensore SP5C

MINOLTA



Direct Connect Sensor: **FMT-XXX/MMH (0.9 m)***

Kontron

7840/7845/7137, Micromon, Minimon, Supermon, Kolormon Trakmon

BCI



Adapter & Extension Cable: **AEC-5109 (2.4 m)**

Sensor: **FMT-XXX/BCI (0.9 m)**

Kontron

7840/7845/7137, Micromon, Minimon, Supermon, Kolormon Trakmon

BCI



Direct Connect Sensor: **FMT-XXX/KNT-L (3.0 m)**

7840/7845/7137, Micromon, Minimon, Supermon, Kolormon, Trakmon

NELCOR



Adapter & Extension Cable: **AEC-5139 (2.4 m)**

Sensor: **FMT-XXX/NLC (0.9 m)**

OXIMAX



Adapter & Extension Cable: **AEC-5158 (2.4 m)**

Sensor: **FMT-XXX/NLO (0.9 m)**

* Refurbished Only

PULSE OXIMETRY SENSORS

Reusable

▼ Brands & Models

▼ Technology

▼ Monitor Side Connector

▼ Sensor Connector

<p>Ktmed KTPM 1010/1020/1030/1040/1050/1060/2002, Angelus</p>	<p>NELCOR</p>	<p>Adapter & Extension Cable: AEC-5175 (2.4 m)</p>	<p>Sensor: FMT-XXX/NLC (0.9 m)</p>
<p>Larsen & Toubro Galaxy</p>	<p>NELCOR</p>	<p>Adapter & Extension Cable: AEC-5198 (2.4 m)</p>	<p>Sensor: FMT-XXX/NLC (0.9 m)</p>
	<p>OXIMAX</p>	<p>Adapter & Extension Cable: AEC-5181 (2.4 m)</p>	<p>Sensor: FMT-XXX/NLO (0.9 m)</p>
<p>Lohmeier ALL</p>	<p>LOHMEIER</p>	<p>Direct Connect Sensor: FMT-XXX/LHM (1.2 m) FMT-XXX/LHM-L (3.0)</p>	
<p>Magna MON-MTEK 30, 33, 35, 40, 80, 85, 1200, 1201, 1300, 1401, 1406, 1411, 1413, 1501, 1503, MOD02, MOD03</p>	<p>BCI</p>	<p>Adapter & Extension Cable: AEC-5105 (2.4 m)</p>	<p>Sensor: FMT-XXX/BCI (0.9 m)</p>
<p>Masimo ALL</p>	<p>MASIMO</p>	<p>Adapter & Extension Cable: AEC-5225 (2.4 m)</p>	<p>Sensor: FMT-XXX/MSM (0.9 m)*</p>
	<p>MASIMO</p>	<p>Direct Connect Sensor: FMT-XXX/MSM-L (3.0 m)*</p>	
<p>Masimo ALL</p>	<p>MASIMO</p>	<p>Adapter & Extension Cable: AEC-5215 (2.4 m)</p>	<p>Sensor: FMT-XXX/MSD (0.9 m)*</p>
<p>MedAir Lifesense, Pulssense</p>	<p>BCI</p>	<p>Adapter & Extension Cable: AEC-5105 (2.4 m)</p>	<p>Sensor: FMT-XXX/BCI (0.9 m)</p>
<p>Mediana YM-2002 series</p>	<p>NELCOR</p>	<p>Adapter & Extension Cable: AEC-5104 (2.4 m)</p>	<p>Sensor: FMT-XXX/NLC (0.9 m)</p>

* Refurbished Only

PULSE OXIMETRY SENSORS

Reusable

▼ Brands & Models

▼ Technology

▼ Monitor Side Connector

▼ Sensor Connector

Medlab

NANOX2

BCI



Adapter & Extension Cable: **AEC-5105 (2.4 m)**



Sensor: **FMT-XXX/BCI (0.9 m)**

P-OX100, P-OX100L

BCI



Adapter & Extension Cable: **AEC-5194 (2.4 m)**



Sensor: **FMT-XXX/BCI (0.9 m)**

Medsorce

BPM200

NELCOR



Adapter & Extension Cable: **AEC-5104 (2.4 m)**



Sensor: **FMT-XXX/NLC (0.9 m)**

MEK

MP 100/110/111/200S/400/500/600/1000.

MEK



Adapter & Extension Cable: **AEC-5147 (2.4 m)**



Sensor: **FMT-XXX/MEK (0.9 m)**

MP 570/700/800/2500

MEK



Adapter & Extension Cable: **AEC-5157 (2.4 m)**



Sensor: **FMT-XXX/MEK (0.9 m)**

MEK



Direct Connect Sensor: **FMT-XXX/MEK-LD (3.0 m)**

MP1200

MEK



Adapter & Extension Cable: **AEC-5177 (2.4 m)**



Sensor: **FMT-XXX/MEK (0.9 m)**

MEK

MP1200

MEK



Direct Connect Sensor: **FMT-XXX/MEK-LH (3.0 m)**

NELCOR



Adapter & Extension Cable: **AEC-5178 (2.4 m)**



Sensor: **FMT-XXX/NLC (0.9 m)**

NELCOR



Direct Connect Sensor: **FMT-XXX/MEK-LN (3.0 m)**

* Refurbished Only

PULSE OXIMETRY SENSORS

Reusable

▼ Brands & Models

▼ Technology

▼ Monitor Side Connector

▼ Sensor Connector

Mennen

Horizon XL (Ohmeda)

OHMEDA



Direct Connect Sensor: **FMT-XXX/OHM-L (3.0 m)**

Horizon XL/2000, Mercury 1200, MR1300, Envoy

NELCOR



Adapter & Extension Cable: **AEC-5180 (2.4 m)**

Sensor: **FMT-XXX/NLC (0.9 m)**

Envoy

NELCOR

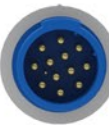


Adapter & Extension Cable: **AEC-5179 (2.4 m)**

Sensor: **FMT-XXX/NLC (0.9 m)**

Envoy, Vitalogik 4000/4500.

NELCOR



Adapter & Extension Cable: **AEC-5192 (2.4 m)**

Sensor: **FMT-XXX/NLC (0.9 m)**

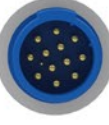
OXIMAX



Adapter & Extension Cable: **AEC-5155 (2.4 m)**

Sensor: **FMT-XXX/NLO (0.9 m)**

MASIMO



Adapter & Extension Cable: **AEC-5207 (2.4 m)**

Sensor: **FMT-XXX/MSM (0.9 m)***

Metrax Primedic

DM1/3/10/30, ED-210/220/230/240

NELCOR



Adapter & Extension Cable: **AEC-5107 (2.4 m)**

Sensor: **FMT-XXX/NLC (0.9 m)**

Metrax Primedic

XD300/330/3 xe, Heart Save 6S

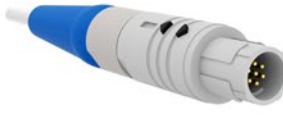
OXIMAX



Adapter & Extension Cable: **AEC-5118 (2.4 m)**

Sensor: **FMT-XXX/NLO (0.9 m)**

OXIMAX



Adapter & Extension Cable: **AEC-5156 (2.4 m)**

Sensor: **FMT-XXX/NLO (0.9 m)**

Mindray

PM 6000 / 7000 / 8000 / 9000, MEC1000/1200
2000, VS 800.

NELCOR



Adapter & Extension Cable: **AEC-5106 (2.4 m)**

Sensor: **FMT-XXX/NLC (0.9 m)**

* Refurbished Only

PULSE OXIMETRY SENSORS

Reusable

Brands & Models

Technology

Monitor Side Connector

Sensor Connector

Mindray

NELCOR



Direct Connect Sensor: **FMT-XXX/MND-L (3.0 m)**

OXIMAX



Adapter & Extension Cable: **AEC-5206 (2.4 m)**

Sensor: **FMT-XXX/NLO (0.9 m)**

OXIMAX



Direct Connect Sensor: **FMT-XXX/MND-LO (3.0 m)**

MASIMO



Adapter & Extension Cable: **AEC-5209 (2.4 m)**

Sensor: **FMT-XXX/MSM (0.9 m)***

MASIMO



Adapter & Extension Cable: **AEC-5239 (2.4 m)**

Sensor: **FMT-XXX/MSD (0.9 m)***

PM-5000 / 6000 / 8000

NELCOR



Adapter & Extension Cable: **AEC-5136 (2.4 m)**

Sensor: **FMT-XXX/NLC (0.9 m)**

PM-5000 / 6000 / 8000

MASIMO



Adapter & Extension Cable: **AEC-5210 (2.4 m)**

Sensor: **FMT-XXX/MSM (0.9 m)***

Mindray

BeneView T1/T5/T6/T8/T9, BeneHeart D6, iPM 9800/12/10/8, iMEC 12/10/8, VS600, VS900.

NELCOR



Adapter & Extension Cable: **AEC-5160 (2.4 m)**

Sensor: **FMT-XXX/NLC (0.9 m)**

NELCOR



Direct Connect Sensor: **FMT-XXX/MTN-L (3.0 m)**

OXIMAX



Adapter & Extension Cable: **AEC-5167 (2.4 m)**

Sensor: **FMT-XXX/NLO (0.9 m)**

OXIMAX



Direct Connect Sensor: **FMT-XXX/MTN-LO (3.0 m)**

* Refurbished Only

PULSE OXIMETRY SENSORS

Çok Kullanımlık

▼ Brands & Models

▼ Technology

▼ Monitor Side Connector

▼ Sensor Connector

Mindray

PM 9000, MEC509B

MASIMO



Adapter & Extension Cable: **AEC-5169 (2.4 m)**



Sensor: **FMT-XXX/MSM (0.9 m)***

MASIMO



Direct Connect Sensor: **FMT-XXX/MTN-LM (3.0 m)**

NELCOR



Adapter & Extension Cable: **AEC-5116 (2.4 m)**



Sensor: **FMT-XXX/NLC (3.0 m)**

Nellcor

NPB 290/295/395, N 180/390/3000/6000

NELCOR



Adapter & Extension Cable: **AEC-5148 (2.4 m)**



Sensor: **FMT-XXX/NLC (0.9 m)**

NELCOR



Direct Connect Sensor: **FMT-XXX/NLC-LN (3.0 m)**

N 550/560/595/600x

OXIMAX



Adapter & Extension Cable: **AEC-5149 (2.4 m)**



Sensor: **FMT-XXX/NLO (0.9 m)**

OXIMAX



Direct Connect Sensor: **FMT-XXX/NLO-LO (0.9 m)**

NBP 190/3940/4000

OXIMAX



Adapter & Extension Cable: **AEC-5140 (2.4 m)**



Sensor: **FMT-XXX/NLO (0.9 m)**

All not listed above

NELCOR



Adapter & Extension Cable: **AEC-5104 (2.4 m)**



Sensor: **FMT-XXX/NLC (0.9 m)**

Nellcor

NELCOR



Direct Connect Sensor: **FMT-XXX/NLC-L (3.0 m)**

PULSE OXIMETRY SENSORS

Çok Kullanımlık

▼ Brands & Models

▼ Technology

▼ Monitor Side Connector

▼ Sensor Connector

NewTech Generalmed Solaris

VS-I, VS-V, Neupulse 8B

DIGITAL



Direct Connect Sensor: **FMT-XXX/PRN-LR (3.0 m)**

PM 9000A/9300

DIGITAL



Adapter & Extension Cable: **AEC-5124 (2.4 m)**



Sensor: **FMT-XXX/NTG (0.9 m)**



PM 9000A/9300

DIGITAL



Direct Connect Sensor: **FMT-XXX/NTG-LR (3.0 m)**



NT3 series

DIGITAL



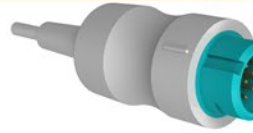
Direct Connect Sensor: **FMT-XXX/NTG-L (3.0 m)**



Nihon Kohden

AL-800PA module, Life Scope series BSM-1101/2101/
BSM-3101/7100/7200/8200/8201/8301/8800/8800A
OLV-1100A.

NIHON KOHDEN NIHON KOHDEN



Adapter & Extension Cable: **AEC-5235 (2.4 m)**



Sensor: **FMT-XXX/NKN (1.6 m)**



Direct Connect Sensor: **FMT-XXX/NKN-LC (3.0 m)**



AL900P module, BSM-1102, 9510, OGS-2000

NELLCOR



Adapter & Extension Cable: **AEC-5104 (2.4 m)**



Sensor: **FMT-XXX/NLC (0.9 m)**

Life Scope series BSM-2300/2301A/2351/2353/2301/ 2303
BSM-4100/4101/4103/4111/4113/5100/5105/5135/6000
BSM-6301K/6501K/6701K/9510/9800

NIHON KOHDEN NIHON KOHDEN



Adapter & Extension Cable: **AEC-5122 (2.4 m)**



Sensor: **FMT-XXX/NKN (1.6 m)**



Direct Connect Sensor: **FMT-XXX/NKN-L (3.0 m)**



Nihon Kohden

OPV-1500 Life Scope N / K, Oxypal OLV2700,
Oxypal Neo OLV-3100.

NIHON KOHDEN



Adapter & Extension Cable: **AEC-5112 (2.4 m)**



Sensor: **FMT-XXX/NKN (1.6 m)**



PULSE OXIMETRY SENSORS

Reusable

▼ Brands & Models

▼ Technology

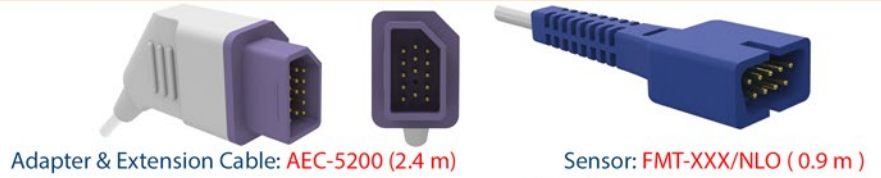
▼ Monitor Side Connector

▼ Sensor Connector

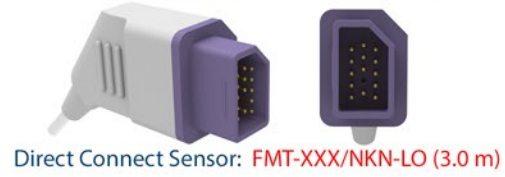
Nihon Kohden

Life Scope TR, BSM-6000 series, BSM-6310K, BSM-6501K, BSM-6701K, AY-651P, AY-653P module.

OXIMAX



OXIMAX



NIHON KOHDEN



Nonin

PM90, PM900A, PM9300

NONIN



Novamatrix

505, 510, 511, 515, 515A, 515B, 515C, 520, 520A, 2001, 7000, 7100, Oxypleth

NOVAMETRIX



NOVAMETRIX



Handheld 512, 513, 710, 745

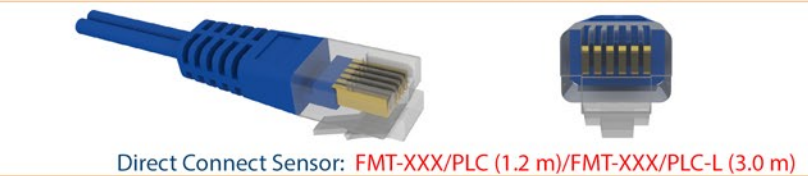
NOVAMETRIX



Palco

300, 305, 340, 900, 960P, 5305

PALCO



Petas

KMA 800/375/275/175, PM 100/150

NELLCOR



KMA 160/165/260/265/360/365

NELLCOR



Philips HP

78352C, 78354C, 78834C, M1020A, M1025B, M1205A, M1350, M1722A/B, M1732A/B, M2475B, Viridia A1, Viridia A3.

NELLCOR



PULSE OXIMETRY SENSORS

Reusable

▼ Brands & Models

▼ Technology

▼ Monitor Side Connector

▼ Sensor Connector

Philips HP

M1020A, M2475B, M1732A/B, M1722A/B, 78833C, 78833A, 78834A, 78352C, 78352A

NELLCOR



Direct Connect Sensor: **FMT-XXX/HPB-L (3.0 m)**

M3, M4, MP20, MP30, MP40, MP50, MP70, MP80, VM4, VM6, VM8

PHILIPS



Adapter & Extension Cable: **AEC-5127 (2.4 m)**

Sensor: **FMT-XXX/HPS (1.0 m)**

NELLCOR



Adapter & Extension Cable: **AEC-5126 (2.4 m)**

Sensor: **FMT-XXX/NLC (0.9 m)**

PHILIPS



Direct Connect Sensor: **FMT-XXX/HPS-L (3.0 m), FMT-XXX/HPS (1.0 m)**

M1020B, M3000A/M3001A MMS, M3002A MMS X2, M8102A MP2, M8105A MP5

PHILIPS



Adapter & Extension Cable: **AEC-5128 (2.4 m)**

Sensor: **FMT-XXX/HPS (1.0 m)**

MASIMO



Adapter & Extension Cable: **AEC-5220 (2.4 m)**

Sensor: **FMT-XXX/MSM (0.9 m)***

MASIMO



Adapter & Extension Cable: **AEC-5221 (2.4 m)**

Sensor: **FMT-XXX/MSD (0.9 m)***

M3, M4, MP20, MP30, MP40, MP50, MP70, MP80, VM4, VM6, VM8

OXIMAX



Adapter & Extension Cable: **AEC-5223 (2.4 m)**

Sensor: **FMT-XXX/NLO (0.9 m)**

Viridia A1:M3921A, M3923A, A3:M3927A, M3929A

NELLCOR



Adapter & Extension Cable: **AEC-5104 (2.4 m)**

Sensor: **FMT-XXX/NLC (0.9 m)**

Physio Control Medtronic

Lifepak 12

NELLCOR



Adapter & Extension Cable: **AEC-5104 (2.4 m)**

Sensor: **FMT-XXX/NLC (0.9 m)**

* Refurbished Only

▼ Brands & Models

▼ Technology

▼ Monitor Side Connector

▼ Sensor Connector

Physio Control Medtronic

Lifepak 12/20/20e

MASIMO



Adapter & Extension Cable: **AEC-5225 (2.4 m)**

Sensor: **FMT-XXX/MSM (0.9 m)***

MASIMO



Adapter & Extension Cable: **AEC-5215 (2.4 m)**

Sensor: **FMT-XXX/MSD (0.9 m)***

Progetti

EPG View

BCI



Adaptör & Uzatma Kablosu: **AEC-5114 (2.4 m)**

Sensor: **FMT-XXX/BCI (0.9 m)**

BCI



Direct Connect Sensor: **FMT-XXX/CHC-LR (3.0 m)**

RGB

Omicrom FT Surveyor, Omicrom Vision, Oxydina

BCI



Adapter & Extension Cable: **AEC-5102 (2.4 m)**

Sensor: **FMT-XXX/BCI (0.9 m)**

RisingMed

RPM 9000A/9000B/9000C

BCI



Direct Connect Sensor: **FMT-XXX/RGB-LR (3.0 m)**

NELCOR



Direct Connect Sensor: **FMT-XXX/RSD-L (3.0 m)**

Saadat

Masimo Set olmayan tüm modeller

NELCOR



Adapter & Extension Cable: **AEC-5185 (2.4 m)**

Sensor: **FMT-XXX/NLC (0.9 m)**

Aria, Alborz B5/B9, Novin S630/S740/S1600/S1800

MASIMO



Adapter & Extension Cable: **AEC-5215 (2.4 m)**

Sensor: **FMT-XXX/MSD (0.9 m)***

Aria, Alborz B5/B9, Novin S630/S740/S1600/S1800

MASIMO



Adapter & Extension Cable: **AEC-5225 (2.4 m)**

Sensor: **FMT-XXX/MSM (0.9 m)***

PULSE OXIMETRY SENSORS

Reusable

▼ Brands & Models

▼ Technology

▼ Monitor Side Connector

▼ Sensor Connector

Sazgan Gostar

Vista

NOVAMETRIX



Direct Connect Sensor: **FMT-XXX/SAZ-L (3.0 m)**

Schiller

Oximeter OX-1, Argus Pro

MASIMO



Adapter & Extension Cable: **AEC-5215 (2.4 m)**

Sensor: **FMT-XXX/MSD (0.9 m)***

MASIMO

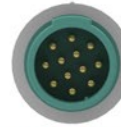


Adapter & Extension Cable: **AEC-5225 (2.4 m)**

Sensor: **FMT-XXX/MSM (0.9 m)***

Argus LCM, Physiogard TM910

BCI



Adapter & Extension Cable: **AEC-5141 (2.4m)**

Sensor: **FMT-XXX/BCI (0.9m)**

Argus TM7, CM8

BCI



Adapter & Extension Cable: **AEC-5164 (2.4 m)**

Sensor: **FMT-XXX/BCI (0.9 m)**

NELLCOR



Adapter & Extension Cable: **AEC-5165 (2.4 m)**

Sensor: **FMT-XXX/NLC (0.9 m)**

Argus PRO, Argus LCM

NELLCOR



Direct Connect Sensor: **FMT-XXX/SHA-L (3.0 m)**

OXIMAX



Adapter & Extension Cable: **AEC-5166 (2.4 m)**

Sensor: **FMT-XXX/NLO (0.9 m)**

Argus TM7, CM8

MASIMO



Adapter & Extension Cable: **AEC-5196 (2.4 m)**

Sensor: **FMT-XXX/MSD (0.9 m)***

MASIMO



Adapter & Extension Cable: **AEC-5216 (2.4 m)**

Sensor: **FMT-XXX/MSM (0.9 m)***

* Refurbished Only

PULSE OXIMETRY SENSORS

Reusable

▼ Brands & Models

▼ Technology

▼ Monitor Side Connector

▼ Sensor Connector

Spacelabs

1050, 1600, 1700, 90369, 90469, 91220-B, 904, 96, Ultraview ve Ultraview SL

NELCOR



Adapter & Extension Cable: **AEC-5174 (2.4 m)**

Sensor: **FMT-XXX/NLC (0.9 m)**

OXIMAX



Adapter & Extension Cable: **AEC-5227 (2.4m)**

Sensor: **FMT-XXX/NLO (0.9 m)**

90303B, 90309, 90351-0/6, 90465, 0466, 90489, 90651A-08, 90651-A, IM77, 90308, Scout

NELCOR



Adapter & Extension Cable: **AEC-5150 (2.4 m)**

Sensor: **FMT-XXX/NLC (0.9 m)**

NELCOR



Direct Connect Sensor: **FMT-XXX/SPL-L (3.0 m)**

90343/91343/96218 telemetry transmitters

NELCOR



Adapter & Extension Cable: **AEC-5240 (0.6 m)**

Sensor: **FMT-XXX/NLC (0.9 m)**

Spengler

Monica 200/2000

NELCOR



Adapter & Extension Cable: **AEC-5176 (2.4 m)**

Sensor: **FMT-XXX/NLC (0.9 m)**

S&W

Artema Diascope 2, Gamme 8000

NELCOR



Adapter & Extension Cable: **AEC-5113 (2.4 m)**

Sensor: **FMT-XXX/NLC (0.9 m)**

NELCOR



Direct Connect Sensor: **FMT-XXX/SW-L (3.0 m)**

Athena 9050, 9060

OHMEDA



Direct Connect Sensor: **FMT-XXX/AT-L (3.0 m)**

Triton

MP6-03 AX/RX/TX

NELCOR



Adapter & Extension Cable: **AEC-5234 (2.4 m)**

Sensor: **FMT-XXX/NLC (0.9 m)**

NELCOR



Direct Connect Sensor: **FMT-XXX/TRT-L (3.0 m)**

PULSE OXIMETRY SENSORS

Reusable

▼ Brands & Models

▼ Technology

▼ Monitor Side Connector

▼ Sensor Connector

Utas
UM 300 - 10 / 15

OXIMAX



Adapter & Extension Cable: **AEC-5255 (2.4m)**

Sensor: **FMT-XXX/NLO (0.9 m)**

Üzümcü
Visio Mod

OXIMAX



Adapter & Extension Cable: **AEC-5238 (2.4 m)**

Sensor: **FMT-XXX/NLO (0.9 m)**

Visio

OXIMAX



Adapter & Extension Cable: **AEC-5243 (2.4 m)**

Sensor: **FMT-XXX/NLO (0.9 m)**

Vitalog

HEPSİ

CSI



Adapter & Extension Cable: **AEC-5146 (2.4 m)**

Sensor: **FMT-XXX/CRT (0.9 m)**

CSI



Direct Connect Sensor: **FMT-XXX/CRT - LL (3.0 m)**

Welch Allyn

Propaq 206-EL, 204-EL, 202-EL, 106- EL

NELCOR



Adapter & Extension Cable: **AEC-5104 (2.4 m)**

Sensor: **FMT-XXX/NLC (0.9 m)**

Propaq 242

OXIMAX



Adapter & Extension Cable: **AEC-5140 (2.4 m)**

Sensor: **FMT-XXX/NLO (0.9 m)**

PIC 30, PIC 40 & PIC 50

OXIMAX



Adapter & Extension Cable: **AEC-5212 (1.2 m)**

Sensor: **FMT-XXX/NLO (0.9 m)**

Zoll

Basic M & AED serisi

MASIMO



Adapter & Extension Cable: **AEC-5225 (2.4 m)**

Sensor: **FMT-XXX/MSM (0.9 m)***

MASIMO



Adapter & Extension Cable: **AEC-5215 (2.4 m)**

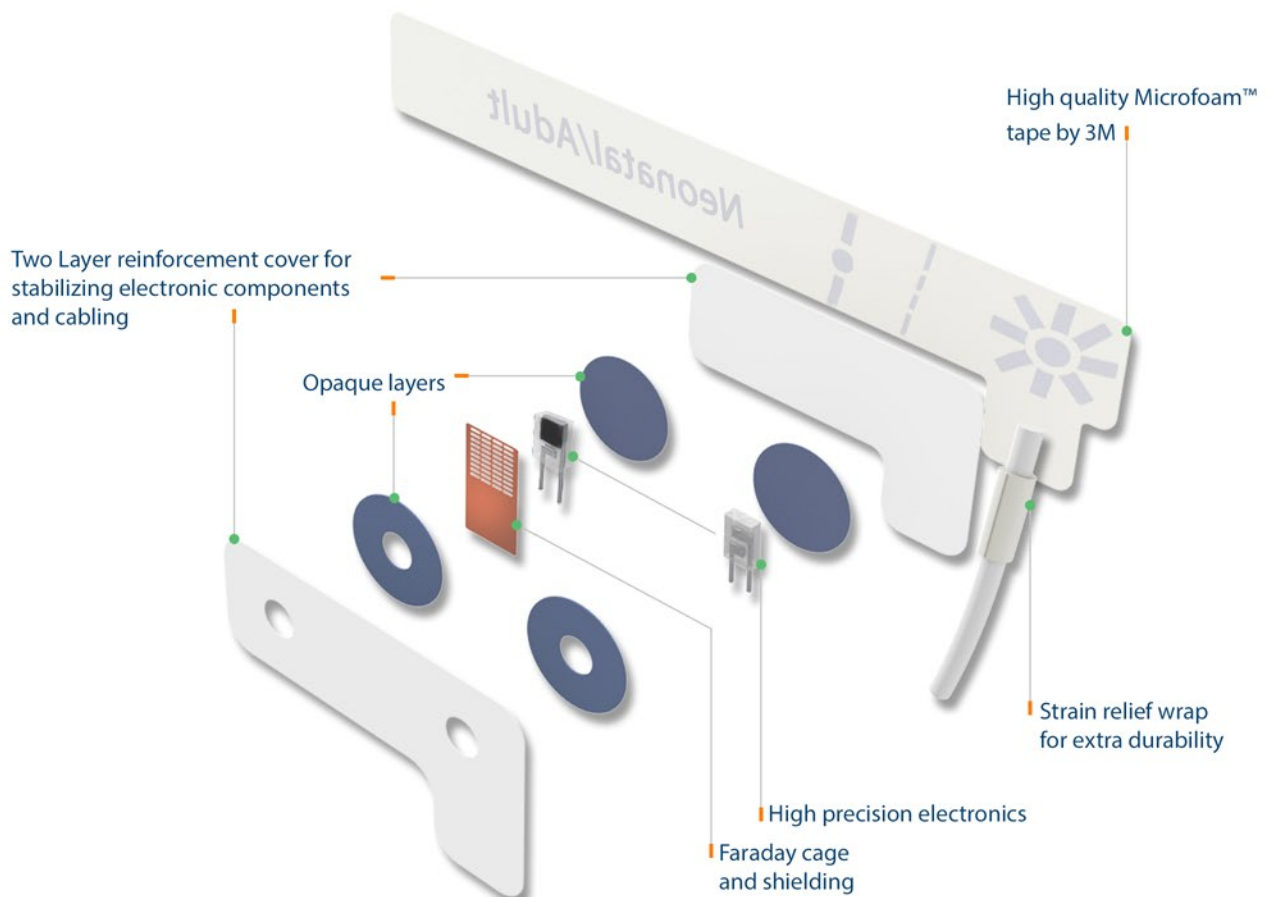
Sensor: **FMT-XXX/MSD (0.9 m)***

* Refurbished Only

■ Features

- Ideal for extended monitoring or minimizing the risk of infection where the risk of cross-contamination is high.
- Special design that ensures easy and accurate sensor placement and functionality.
- Made of flexible shielded cable, high accuracy electronic components.
- 3M Microfoam™ foam type or Medaplast™ fabric type adhesive materials.
These adhesive materials with medium adhesion maximize patient comfort and allow the sensor to be easily moved and quickly reapplied when repositioning.
- Four sizes of comfortable and accurate disposable sensors designed to fit adult, pediatric, infant and neonatal patients. They are compatible with major leading manufacturers of patient monitoring and pulse oximetry systems.
- High signal accuracy. Accuracy is $\pm 1\%$ between 90%-100%, $\pm 2\%$ between 70%-89% and $\pm 3\%$ between 60%-70%.
Added Faraday cage and shielding feature reduces the effect of magnetic interference from the environment and increases the accuracy of the measurement. All disposable sensors have two different layers of opaque material, covering electronic components for minimizing effects of ambient light.
- Provide accurate measurements for mobile patients, patients with low perfusion and low body temperature.
- Sold in 24 pieces per pack.
- Latex-free and meet industry standards for biocompatibility.

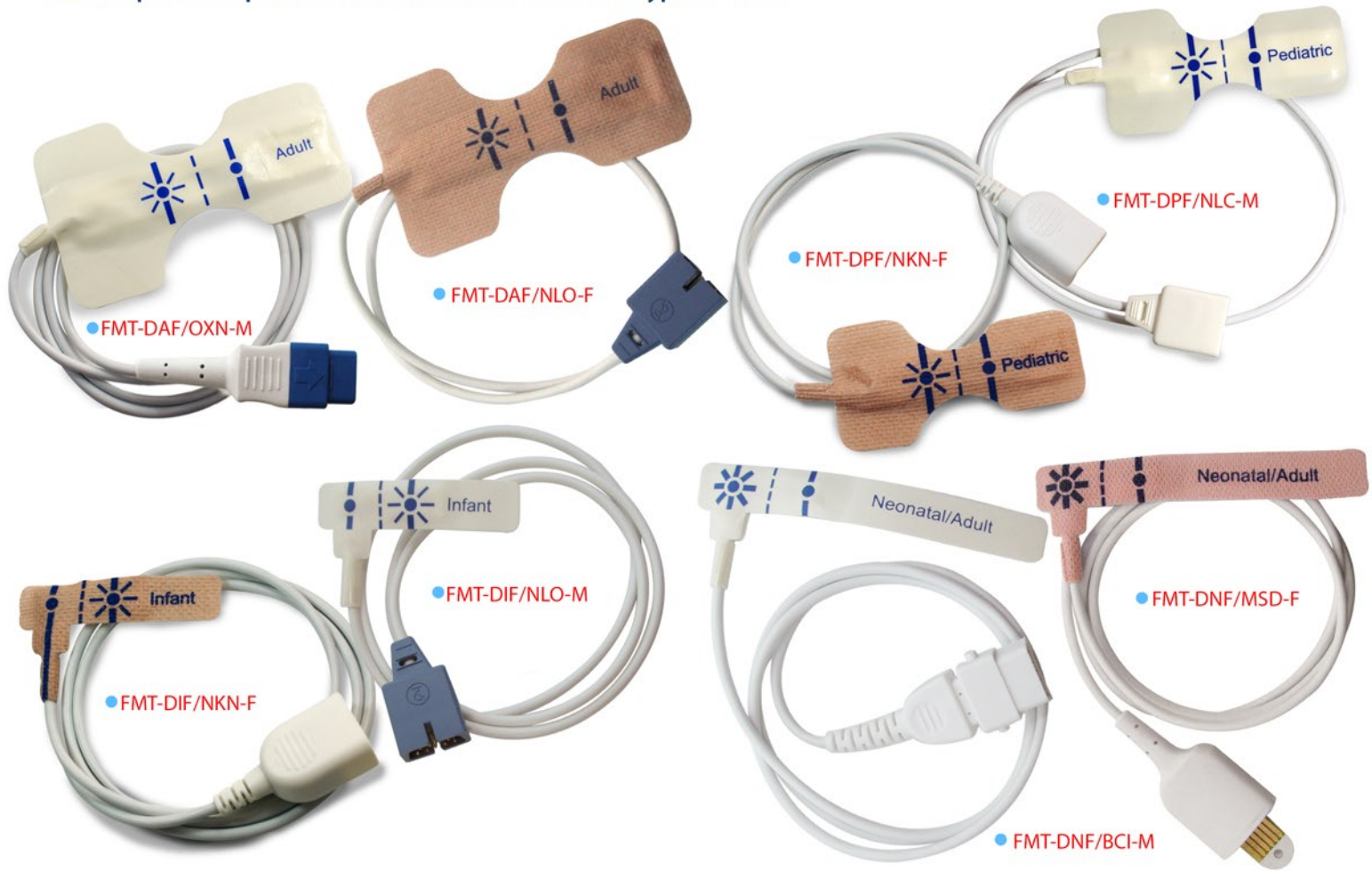
■ Why FMT Disposable SpO2 Sensors?



PULSE OXIMETRY SENSORS

Disposable

Disposable SpO2 Sensors with Foam and Fabric type material



▼ Sensor Type	▼ Patient Type	▼ Patient Weight	▼ Cable Length	▼ Preferred Application Area
FMT-DAF/XXX-Y	Adult	>30 kg (>66 lbs)	45 cm	Index Finger
FMT-DPF/XXX-Y	Pediatric	10-50 kg (22-110 lbs)	45 cm	Index Finger
FMT-DIF /XXX-Y	Infant	1-20 kg (2.2-44 lbs)	90 cm	Big Toe
FMT-DNF/XXX-Y	Neonatal/Adult	<3 kg or >30 kg (<6.6 lbs or > 66 lbs)	90 cm	Lateral aspect of foot or Index finger (for adult)

▼ Compatible Brand	▼ Adult	▼ Pediatric	▼ Infant	▼ Neonatal / Adult
BCI*	FMT-DAF / BCI - Y	FMT-DPF / BCI - Y	FMT-DIF / BCI - Y	FMT-DNF / BCI - Y
Criticare(CSI)*	FMT-DAF / CSI - Y	FMT-DPF / CSI - Y	FMT-DIF / CSI - Y	FMT-DNF / CSI - Y
Datex*	FMT-DAF / DTX - Y	FMT-DPF / DTX - Y	FMT-DIF / DTX - Y	FMT-DNF / DTX - Y
GE OxyTip (UN Connector)*	FMT-DAF / OXY - Y	FMT-DPF / OXY - Y	FMT-DIF / OXY - Y	FMT-DNF / OXY - Y
GE TruSignal*	FMT-DAF / OXN - Y	FMT-DPF / OXN - Y	FMT-DIF / OXN - Y	FMT-DNF / OXN - Y
MEK*	FMT-DAF / MEK - Y	FMT-DPF / MEK - Y	FMT-DIF / MEK - Y	FMT-DNF / MEK - Y
Masimo (LNCS)*	FMT-DAF / MSM - Y	FMT-DPF / MSM - Y	FMT-DIF / MSM - Y	FMT-DNF / MSM - Y
Masimo (LNOP)*	FMT-DAF / MSD - Y	FMT-DPF / MSD - Y	FMT-DIF / MSD - Y	FMT-DNF / MSD - Y
Nellcor	FMT-DAF / NLC - Y	FMT-DPF / NLC - Y	FMT-DIF / NLC - Y	FMT-DNF / NLC - Y
Nellcor Oximax	FMT-DAF / NLO - Y	FMT-DPF / NLO - Y	FMT-DIF / NLO - Y	FMT-DNF / NLO - Y
Nihon Kohden	FMT-DAF / NKN - Y	FMT-DPF / NKN - Y	FMT-DIF / NKN - Y	FMT-DNF / NKN - Y
Nonin*	FMT-DAF / NON - Y	FMT-DPF / NON - Y	FMT-DIF / NON - Y	FMT-DNF / NON - Y
Novametrix*	FMT-DAF / NVM - Y	FMT-DPF / NVM - Y	FMT-DIF / NVM - Y	FMT-DNF / NVM - Y

* Manufactured upon order

Y: "Y" for wrap material. Please add "M" for microfoam, "F" for fabric material.

Example: FMT-DAF/NLC-F means fabric material, adult size, disposable SpO2 sensor for Nellcor.

FMT-DVF Series single patient use SpO2 sensors

Due to the non-adhesive Velcro design, the repositioning of the sensor is possible for many times without deforming the sensor body.

FMT Single Patient ▼ Use Sensor	▼ Patient Type	▼ Patient Weight	▼ Cable Length	▼ Preferred Application Area
FMT-DVF/XXX	Neonatal/Adult	<3 kg or >30 kg (<6.6 lbs or >66 lbs)	90 cm	Lateral aspect of foot or Index finger (for adult)



▼ Compatible Brand	▼ Neonatal / Adult
BCI*	FMT-DVF / BCI
Criticare(CSI)*	FMT-DVF / CSI
Datex*	FMT-DVF / DTX
GE OxyTip (UN Connector)*	FMT-DVF / OXY
GE TruSignal*	FMT-DVF / OXN
MEK*	FMT-DVF / MEK
Masimo (LNOP)*	FMT-DVF / MSD
Masimo (LNCS)*	FMT-DVF / MSM
Nellcor	FMT-DVF / NLC
Nellcor Oximax	FMT-DVF / NLO
Nihon Kohden	FMT-DVF / NKN
Nonin*	FMT-DVF / NON
Novamatrix*	FMT-DVF / NVM

* Manufactured upon order